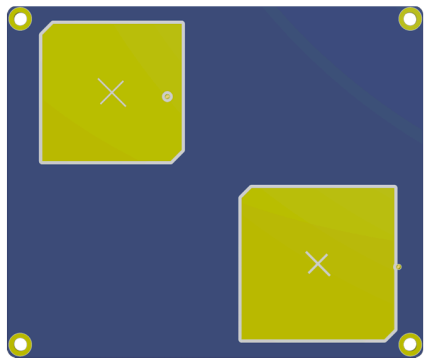




# **SIGNAL ANTENNA SYSTEMS**

## **MODEL: SPA5-2000DB-RH**

**SPA5-2000DB-RH:** S-Band, Rx-Tx antenna designed and optimized for Telemetry, Tracking & Command (TT&C) and small satellite communications, providing robust right-hand circular polarization (RHCP), low VSWR, and stable gain in a compact, lightweight package ideal for CubeSat, nanosatellite, UAV, and other platforms.



<b>SPA5-2000DB-RH, RX-TX (Dual Band) ANTENNA</b>	
Frequency Range	Rx: 2020–2110 MHz Tx: 2200–2320 MHz
Gain	Rx: 5.5 dBiC Rx: 6.0 dBiC
3-dB Beamwidth	80° typ.
Polarization	RHCP
Axial Ratio	< 3.0
VSWR	1.8:1 max
Impedance	50 Ohm
Power Handling	5 W (CW) Each Port
<b>MECHANICAL</b>	
Dimensions	3.86"x3.25"x0.13"
Weight	2.0 oz
Mounting	4X Holes for 4-40 or M3 Screws
Interface	SMP Jack (Limited Detent)

